

Organization Setup :

State Level :

Office of the Director of Adult Education acts as the Secretariat for TSLMA. The TSLMA plans and implements various programmes of the department. The TSLMA monitors the programmes through periodic monthly meetings and the Member-Convenor, SLMA reviews the activities in monthly monitoring meetings and reports to NLMA, Government of India and Government Telangana.

District Level:

At the District level Zilla Lok Siksha Samithi (ZLSS) is the Nodal Agency for literacy programmes. The Chairman of Zilla Parishad is the Chairman of ZLSS District Collector is the Chairman of the Zilla Lok Siksha Samithi and Deputy Director of Adult Education is the Secretary of Zilla Lok Siksha Samithi. It will plan and implement all literacy programmes in the district with the convergence of various developmental departmental activities and exercise involvement of local bodies at various levels.

Division level:

At the Revenue Division Level the functionaries of Adult Education Department i.e., Project Officer, Assistant Project Officer provide motivation, training and guidance in running of various adult education programmes under the overall control of Zilla Lok Siksha Samithi and supervise and monitor the implementation of various programmes covering entire Revenue Division.

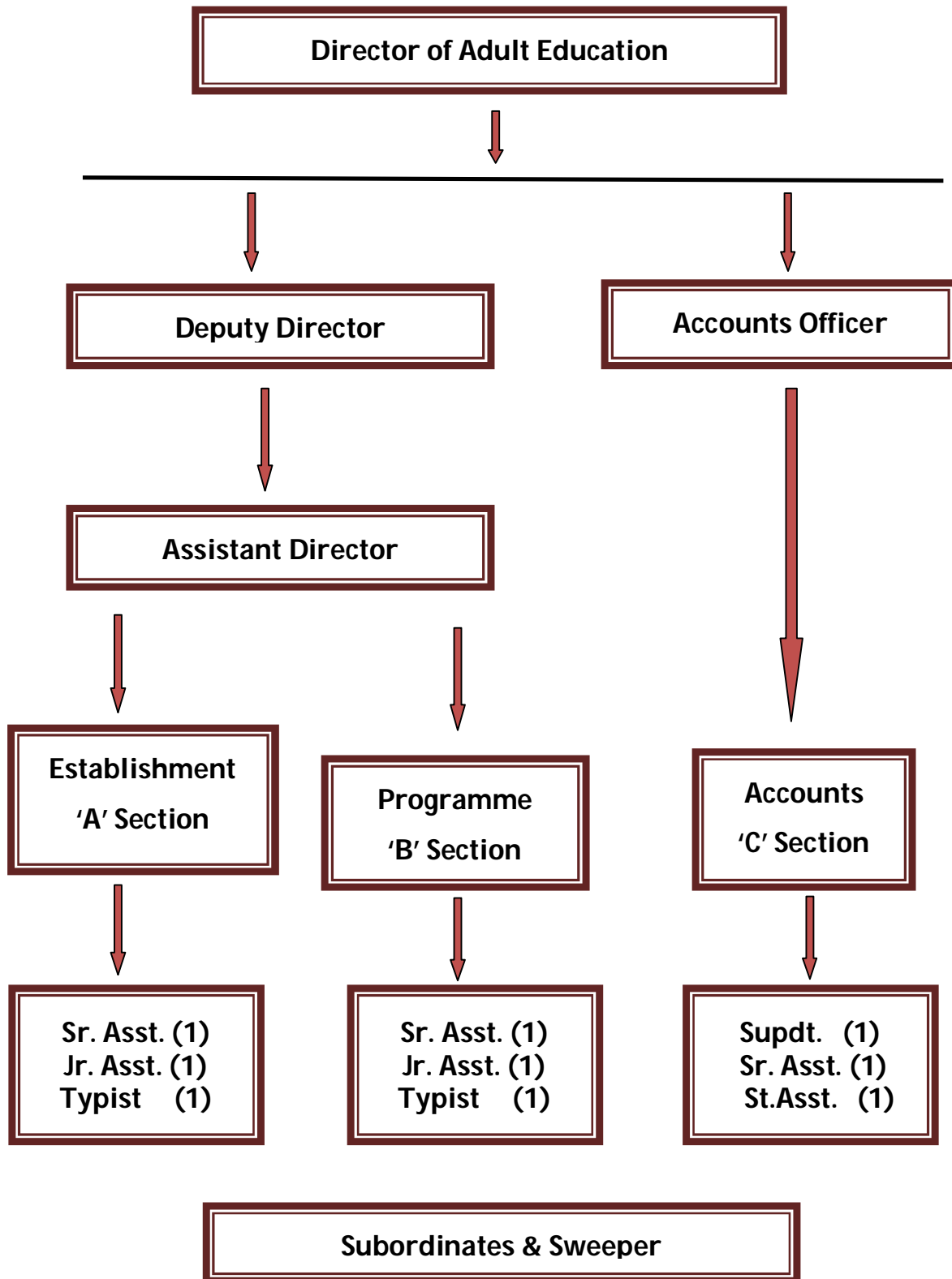
Mandal Level:

The Mandal Lok Siksha Samithi (MPLSS) will review the literacy programme in the meetings of standing committees. Mandal Coordinator (MC) frequently visit adult literacy centres in the mandals. They attend the MPP meetings and report about the progress of the centres. The MC is located in the Mandal Parishad Development Office. They organize and supervise the running of AE centres daily routine work of various adult literacy programmes in the entire mandal.

Gram Panchayat Level:

The Coordinators are taking care of the various activities of the literacy and Continuing Education in the Gram Panchayat. The Gram Panchayat Education Committee will oversee the quality, quantity and equity of the programme. The Gram Panchayat Lok Siksha Samithi (GPLSS) will oversee the quality, quantity and equity of the programme and supervise the conduct of various programmes in the Adult Education Centres.

ORNISATIONAL STRUCTURE AT STATE LEVEL



Organizational Structure

Local Body Involved Implementing Agency Supporting Structure

